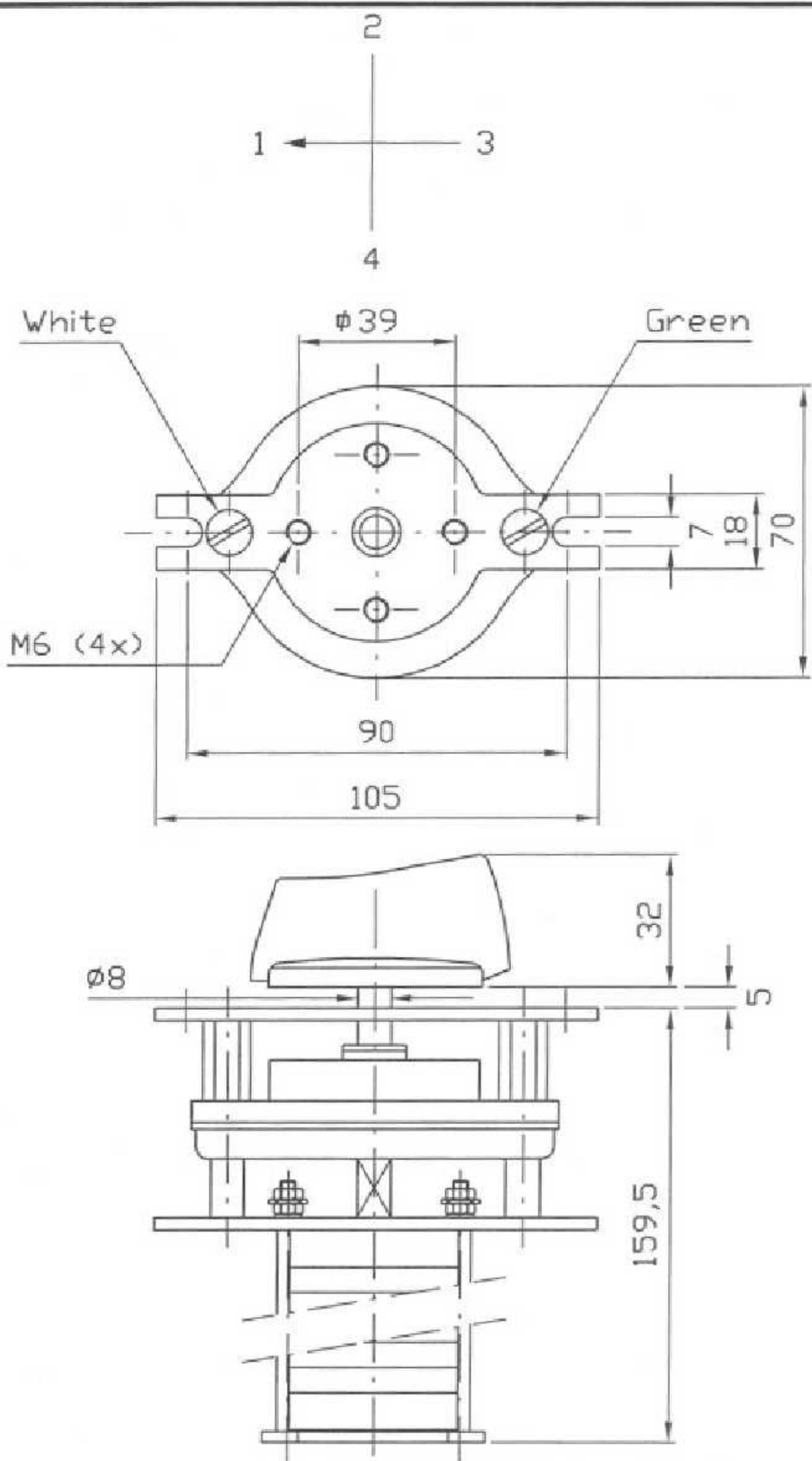


POSITION OF HANDLE	1	1-A	6-F
		2-B	7-G
		3-C	8-H
		4-D	9-J
		5-E	10-K
	2	11-L	16-Q
		12-M	17-R
		13-N	18-S
		14-O	19-T
		15-P	20-U
	3	1-A	6-F
		2-B	7-G
		3-C	8-H
		4-D	9-J
		5-E	10-K
	4	11-L	16-Q
		12-M	17-R
		13-N	18-S
		14-O	19-T
		15-P	20-U

Ith	Ie	Ue
16A	16A	440V AC22
	16A	250V DC21



B				
A				
Rev.		Drn by	Date	App. by
RP 12016/94LB21				
Drn by C.Z.		Date : 28-02-2006		App. by :
		Computer nr.		94LB21

Handle position					
Terminal marking					
1	1	A	X	X	X
2	10	K	X	X	X
3	11	L	X	X	X
4	12	M	X	X	X
5	13	N	X	X	X
6	14	O	X	X	X
7	15	P	X	X	X
8	16	Q	X	X	X
9	17	R	X	X	X
10	18	S	X	X	X
11	19	T	X	X	X
12	2	B	X	X	X
13	20	U	X	X	X
14	3	C	X	X	X
15	4	D	X	X	X
16	5	E	X	X	X
17	6	F	X	X	X
18	7	G	X	X	X
19	8	H	X	X	X
20	9	J	X	X	X
21					
22					
23					
24					
25					
26					
27					
28					
29					
30					
31					
32					
33					
34					
35					
36					
37					
38					
39					
40					
41					
42					
43					
44					
45					
46					
47					
48					
49					
50					
51					
52					
53					
54					
55					
56					

### Installation - Operation + Maintenance Instructions

**Storage and transport**  
Switches must be protected against dust, dirt, aggressive fumes and liquids during transportation, storage and use.  
**Storage temperature** -60 C - +85 C

**Mounting**  
Fit the switch with the green frame bolt sleeve right handed (position 1) and the grey left handed, seen from the handle side.  
For short switches of less than 12 cells, mounting by either base plate or panel fixing plate is standard. Switches above 12 cells and switches >300A above 7 cells must be mounted on both base and panel fixing plates.  
Secure the handle by fixing the screw hand-tight.

**Wiring**  
Terminal markings are laser printed onto the disc adjacent to the relative terminal.  
Connect the switch with wire in accordance with the table below:

	16A	25A	40A	63A	125A	250A	300A+
Cross section mm <sup>2</sup>	2.5	4	10	16	35	120	120
Screw diameter	M4	M4/M5	M5	M5	M6	M6	M12
Bolt diameter							
Max. screw torque (Nm)	1.5	1.5/2.2	3.0	9.5	23	23	79

Make sure that no pressure is exerted on the plastic disc while tightening the bolt / nut connections (63A and above).  
Connect switches with parallel terminals across corners (see figure):



**Use, inspection and maintenance**  
The changing-over between positions should be smooth and integer.  
Never supply more than 3x the force needed for normal switch operation: switching positions can be limited.  
Terminal connections and switch fixings should be checked at least once a year on mechanical aspects as well as visually for pollution by dust, dirt, aggressive fumes and liquids. If found the polluted switches should be cleaned with a dry cloth.  
All switches should be switched at least once a year several times (10x) to clean the contacts.  
**Usage temperature:** -20 C - +85 C  
**Humidity during use:** max. 95%

Rating according to IEC 947-3				
Main contacts			Pollution Degree (PLDG) 2	
Ue	440	V ~		
Ue	250	V ~		
Ie	16	A	Utilization category AC 22	DC 21
Ith	16	A		
Auxiliary contacts				
Ue		V ~		
Ue		V ~		
Ie		A	Utilization category	
Ith		A		

Special contact functions are not indicated on this Diagram.